

# Acid Reflux

A Practical Guide For Patients



**GastroDoxs**  
— defenders of the digestive system —

**A Patient Guide to Understanding  
Acid Reflux**

[WWW.GASTRODOXS.COM](http://WWW.GASTRODOXS.COM)

# Table of contents

1. Introduction
2. What Causes Acid Reflux?
3. Symptoms
4. Diagnosis
5. Diet
6. Medications
7. Therapies
8. Coping
9. FAQs
10. Take Action



# Introduction: Acid Reflux

Acid reflux occurs when stomach acid flows back into the esophagus, causing irritation and symptoms like heartburn, regurgitation, and chest discomfort. While occasional reflux is common, frequent or severe episodes may indicate gastroesophageal reflux disease (GERD), a chronic condition that can lead to complications if untreated.

Early recognition, lifestyle changes, and proper treatment can help prevent long-term damage to the esophagus and improve quality of life.



## Key Takeaways

- Caused by stomach acid flowing back into the esophagus.
- Common symptoms include heartburn, regurgitation, and chest discomfort.
- Frequent acid reflux may indicate GERD.
- Lifestyle changes and medications are effective treatments.
- Early management prevents complications like esophagitis or strictures.

# What Causes Acid Reflux?

## Known Causes:

Acid reflux can be triggered by a weakened lower esophageal sphincter (LES), obesity, pregnancy, hiatal hernia, or certain medications.



Lifestyle factors like overeating, lying down after meals, smoking, alcohol, and high-fat or spicy foods can also contribute. Some medical conditions, such as delayed stomach emptying, can make reflux worse.



# Common Signs & Symptoms

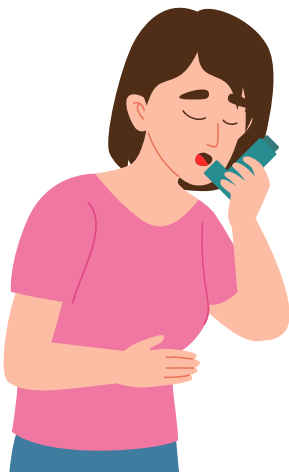
Common symptoms of acid reflux include burning in the chest (heartburn), sour or bitter taste in the mouth, regurgitation, bloating, difficulty swallowing, and worsening discomfort when lying down.

## Core Symptoms Include:

- Heartburn after meals or at night
- Regurgitation of food or sour liquid
- Sour or bitter taste in the mouth
- Bloating and belching
- Difficulty swallowing
- Chest discomfort



## Severe cases can also cause:



- Chronic cough or hoarseness
- Asthma-like symptoms
- Damage to the esophagus (esophagitis)
- Narrowing of the esophagus (strictures)
- Barrett's esophagus
- Increased risk of esophageal cancer



Diagnosis involves reviewing symptoms, physical examination, and tests like upper endoscopy, pH monitoring, esophageal manometry, or imaging studies to confirm acid reflux and assess esophageal damage.

## Diagnostic Tools:

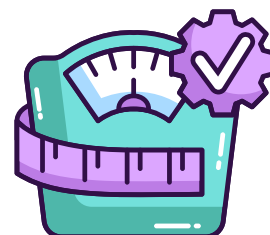
- **Upper Endoscopy** – Examines esophagus and stomach for damage
- **pH Monitoring** – Measures acid levels in the esophagus
- **Esophageal Manometry** – Evaluates muscle function in the esophagus
- **Barium Swallow X-ray** – Detects reflux and structural abnormalities
- **Ambulatory Impedance-pH Test** – Detects both acid and non-acid reflux



A reflux-friendly diet avoids trigger foods like spicy or fatty meals, caffeine, chocolate, and citrus, focusing on smaller, frequent meals and including non-acidic, soothing foods.

## Key Insights:

- **Eat smaller, more frequent meals**
- **Avoid spicy, fatty, and fried foods**
- **Limit caffeine, chocolate, citrus, and tomato-based foods**
- **Include whole grains, lean proteins, and non-citrus fruits**
- **Avoid lying down within 2–3 hours of eating**
- **Maintain a healthy weight**



# Medications & Treatment Options

Treatment may include antacids for quick relief, H2 blockers, proton pump inhibitors, prokinetics, and lifestyle changes. Severe cases may require surgical intervention like fundoplication.

## Treatment Options

- **Antacids** – Neutralize stomach acid for quick relief
- **H2 Blockers** – Reduce acid production
- **Proton Pump Inhibitors (PPIs)** – Strong acid reducers for healing
- **Prokinetics** – Improve stomach emptying and LES tone
- **Surgery (fundoplication)** – For severe, medication-resistant reflux
- **LINX device** – Magnetic ring to strengthen LES



# Advanced Therapies & Procedures

Advanced treatments include minimally invasive surgery, endoscopic therapies, or device-based interventions to strengthen the LES and reduce reflux in patients not responding to medication.

## Therapy Options:

- **Laparoscopic fundoplication** – Wraps stomach around esophagus to prevent reflux
- **LINX reflux management system** – Magnetic bead device to reinforce LES
- **Endoscopic procedures** – Tighten LES without surgery
- **Radiofrequency therapy** – Strengthens LES muscles
- **Hiatal hernia repair** – If contributing to reflux



# Coping With Acid Reflux

Coping strategies include avoiding trigger foods, elevating the head while sleeping, maintaining a healthy weight, managing stress, and following prescribed treatment consistently.

## Practical Strategies

- **Avoid known food triggers**



- **Eat slowly and chew thoroughly**

- **Don't lie down right after eating**



- **Wear loose clothing**

- **Maintain healthy weight**



- **Manage stress with relaxation techniques**





## **Q1: Is acid reflux the same as GERD?**

**A:** Acid reflux refers to occasional symptoms, while GERD is chronic, frequent reflux that may cause complications.

## **Q2: Can acid reflux go away on its own?**

**A:** Mild cases may improve with lifestyle changes, but persistent symptoms should be evaluated by a doctor.

## **Q3: What foods make acid reflux worse?**

**A:** Spicy, fatty, fried foods, chocolate, caffeine, citrus, and tomatoes are common triggers.

## **Q4: Can untreated acid reflux cause serious problems?**

**A:** Yes, chronic reflux can damage the esophagus and increase the risk of Barrett's esophagus or esophageal cancer.

# Take Action

If you experience acid reflux, don't ignore them. Early diagnosis and treatment can prevent complications. Schedule a consultation with **GastroDoxs** for expert guidance on managing your digestive health.

For additional resources, visit [GastroDoxs.com](https://www.gastrodoxs.com).

**Your health starts with knowledge.  
Take the first step today!**

**SCHEDULE AN APPOINTMENT**



**GastroDoxs**  
— defenders of the digestive system —